

UNSHIELDED SMD POWER INDUCTORS / FPI TYPE

FEATURES

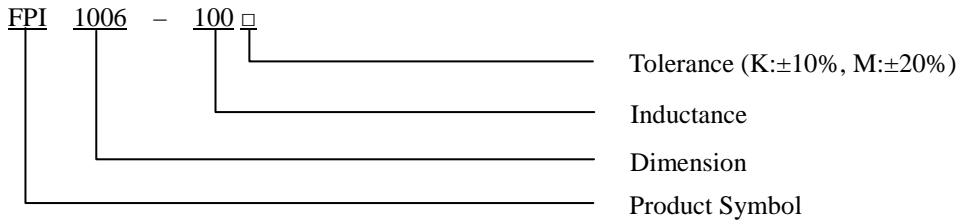
- ◆ Silver Plated Type
- ◆ High power and high saturation
- ◆ Ideal inductors for DC/DC conversion



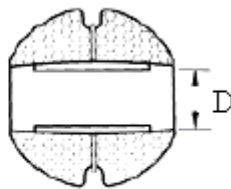
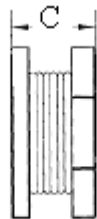
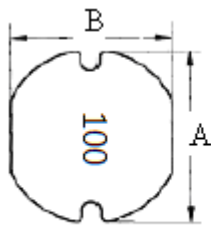
APPLICATIONS

- ◆ Power supply for VTRs.
- ◆ Portable communication equipment.
- ◆ Notebook PCs.
- ◆ LCD televisions.
- ◆ DC/DC converters, etc.

ORDERING CODE



DIMENSIONS (UNIT: mm)



A	10.0 ± 0.4	m/m
B	9.0 ± 0.4	m/m
C	6.5 ± 0.3	m/m
D	3.1 (REF)	m/m

UNSHIELDED SMD POWER INDUCTORS / FPI TYPE

ELECTRICAL CHARACTERISTICS FOR FPI1006

Part No.	Inductance (uH)	RDC (Ω)	IDC (A)
FPI1006-1R5 □	1.5	0.020	20.00
FPI1006-3R3 □	3.3	0.030	15.00
FPI1006-100 □	10	0.050	9.20
FPI1006-150 □	15	0.070	7.00
FPI1006-220 □	22	0.075	6.20
FPI1006-330 □	33	0.090	4.50
FPI1006-390 □	39	0.100	3.80
FPI1006-470 □	47	0.130	2.40
FPI1006-560 □	56	0.140	2.00
FPI1006-680 □	68	0.200	1.75
FPI1006-101 □	100	0.218	1.70
FPI1006-121 □	120	0.280	1.60
FPI1006-151 □	150	0.330	1.50
FPI1006-221 □	220	0.600	1.40
FPI1006-331 □	330	0.750	1.30
FPI1006-471 □	470	1.100	1.20
FPI1006-102 □	1000	3.500	0.45

* 100uH 以上 Test Frequency : 1KHZ/1V

* 100uH 以下 Test Frequency : 2.52MHZ/1V



CORE MASTER ENTERPRISE CO., LTD.

<http://www.coremaster.com.tw>